

WHOLESALE CATALOG

# Garden of Eden Collection



ECSSN  
Sterling silver snake  
on 17" silver chain  
necklace (+1" ext)  
\$26

ECBRN  
Bronze snake on 17"  
gold filled chain  
necklace (+1" ext)  
\$32



ECSSDE  
Sterling silver snake  
earrings (apx 1.5")  
\$40



ECBRDE  
Bronze snake earrings  
(apx 1.5")  
\$32



ECSSAR  
Sterling silver  
adjustable snake ring  
\$30



ECBRAR  
Bronze adjustable  
snake ring  
\$18



## Snake

# Garden of Eden Collection

## Hands



ECBREN  
Bronze dancing Eve on  
17" gold filled chain  
necklace (+1" ext)  
\$32



ECSEN  
Sterling silver dancing  
Eve on 17" silver  
necklace (+1" ext)  
\$28



ECBRHN  
Bronze hands 17"  
necklace (+1" ext)  
\$42



ECSSHN  
Sterling silver hands  
17" necklace (+1" ext)  
\$38

## Eve Dancing



ECBRHE  
Bronze hands  
earrings (apx 1")  
\$33



ECSSHE  
Sterling silver hands  
earrings (apx 1")  
\$45



# Tree of Life Collection



TLBRRSR  
Bronze adjustable, stackable branch  
ring with 1.8mm red sapphires  
\$26



TLSSBSR  
Sterling silver adjustable, stackable  
branch ring with 1.8mm blue sapphires  
\$32



TLBRTR  
Bronze adjustable, stackable branch  
ring with 1.8mm tsavorites  
\$26

TLSSPSR  
Sterling silver adjustable, stackable  
branch ring with 1.8mm pink sapphires  
\$32

TLBRR  
Bronze adjustable,  
stackable branch ring  
\$15

TLSSR  
Sterling silver adjustable,  
stackable branch ring  
\$22

## Branch Rings



TLSSLR  
Sterling silver adjustable,  
stackable large branch ring  
\$34



TLBRLR  
Bronze adjustable, stackable  
large branch ring  
\$18



# Tree of Life Collection



TLBRSSN  
Bronze wrap on 17" sterling  
silver chain necklace  
\$34



TLSSGFN  
Sterling silver wrap on 17"  
gold filled chain necklace  
\$40

## Branch Necklaces

# Tree of Life Collection

## Branch Earrings



TLBRXLE  
Bronze XL branch earrings  
(apx 1.8")  
\$34



TLSSXLE  
Sterling silver XL branch  
earrings (apx 1.8")  
\$44

# Tree of Life Collection



TLBRME  
Bronze medium branch  
earrings (apx 1.2")  
\$34



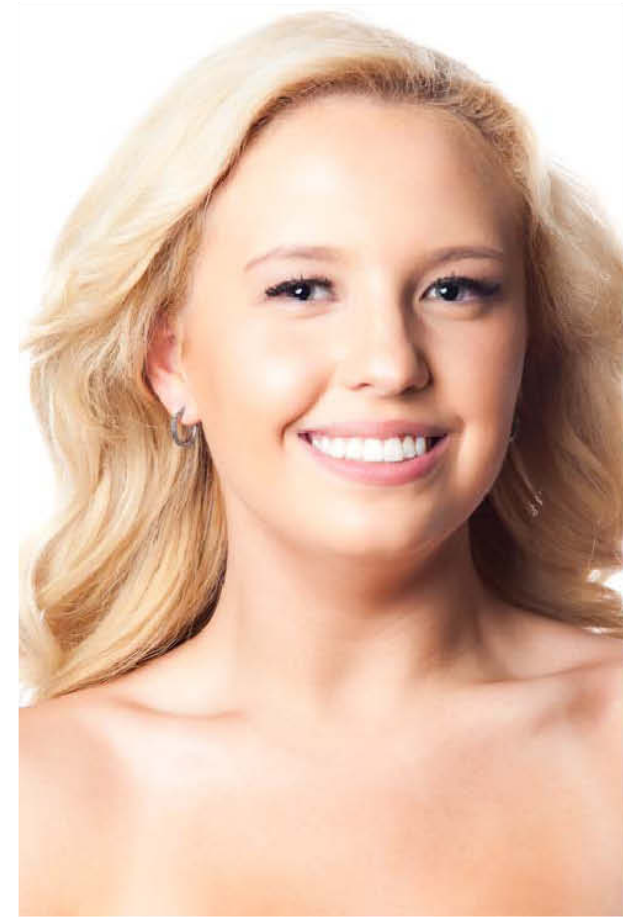
TLSSME  
Sterling silver medium  
branch earrings (apx 1.2")  
\$44



TLBRSE  
Bronze small branch  
earrings (apx 0.7")  
\$18



TLSSSE  
Sterling silver small branch  
earrings (apx 0.7")  
\$24





# Tree of Life Collection



TLSSBG  
Sterling silver adjustable,  
stackable branch bangle  
\$120



TLBRBG  
Bronze adjustable,  
stackable branch bangle  
\$60

## Branch Bangles





# Tree of Life Collection



TLBRCF  
Bronze branch cufflinks  
\$36



TLSSCF  
Sterling silver branch  
cufflinks  
\$65

## Branch Cufflinks



TLBRBSPCF  
Bronze branch cufflinks  
bezel set 3mm black spinel  
\$52



TLSSBSCF  
Sterling silver branch  
cufflinks bezel set 3mm  
labgrown blue sapphire  
\$85

# SMS Jewelry Designs

Through Eve's perspective I have created an optimistic, loving picture. Vibrant and vivaciously dancing into your heart, The Garden of Eden Collection captures the spirit of humanity while exemplifying the balance of life. Reflecting my interpretations, the delicate blends of metals are designed for every lifestyle and personality.

Within the Tree of Life Collection the branch shape expresses the stunning and natural image to personalize special occasions and bring meaning to each day. Extensions of the Tree of Life, the branches symbolize the growth and protection the tree provides.

SMS Jewelry Designs' handmade creations from the Garden of Eden and the Tree of Life are memorable gifts from the heart that will provide inspiration, strengthen relationships, and infuse happiness.

Please share and enjoy these SMS Jewelry Designs concepts of the Garden of Eden and the Tree of Life. May the gifts uplift, protect, and bring happiness to you and those you love.



SMS Jewelry Designs is based and handmade in Austin, Texas. We specialize in combining contemporary looks, metals, and styles to allow each customer to express themselves. Please feel free to contact us with any customization requests and questions.

[smsjewelrydesigns@gmail.com](mailto:smsjewelrydesigns@gmail.com)





SMS Jewelry Designs

Contact: Sarah Merrill-Sampson

[smsjewelrydesigns@gmail.com](mailto:smsjewelrydesigns@gmail.com)

409-679-4750

[www.smsjewelrydesigns.com](http://www.smsjewelrydesigns.com)

Copyright 2014 SMS Jewelry Designs